



# ViSolve Healthcare

## Meaningful Use (MU) Consulting Methodology Datasheet

by  
**ViSolve Healthcare Team**  
**Last Updated Date: June, 2016**

ViSolve, Inc. 6559, Springpath Lane, San Jose, CA 95120, USA Tel: 408 850 2243

Email: [services@visolve.com](mailto:services@visolve.com)

Website: [www.visolve.com/hc](http://www.visolve.com/hc)

# MU consulting methodology:

## ViSolve Healthcare MU consulting Services

---

ViSolve MU consulting services include:

- Verifying the product against the NIST Test Procedures and creation of the Gap Analysis Report
- Providing guidelines for the incomplete MU features
- Demonstrating the EHR to the Certification bodies[ONC-ATCB] on MU Compliance

## Test Scripts

---

NIST Test Scripts to be verified for Ambulatory and Inpatient EHR are:

**a. Ambulatory EHR**

§170.302a through §170.302w

§170.304a through §170.304j

**b. Inpatient EHR**

§170.302a through §170.302w

§170.306a through §170.306i

**c. Both Ambulatory and Inpatient EHR**

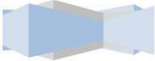
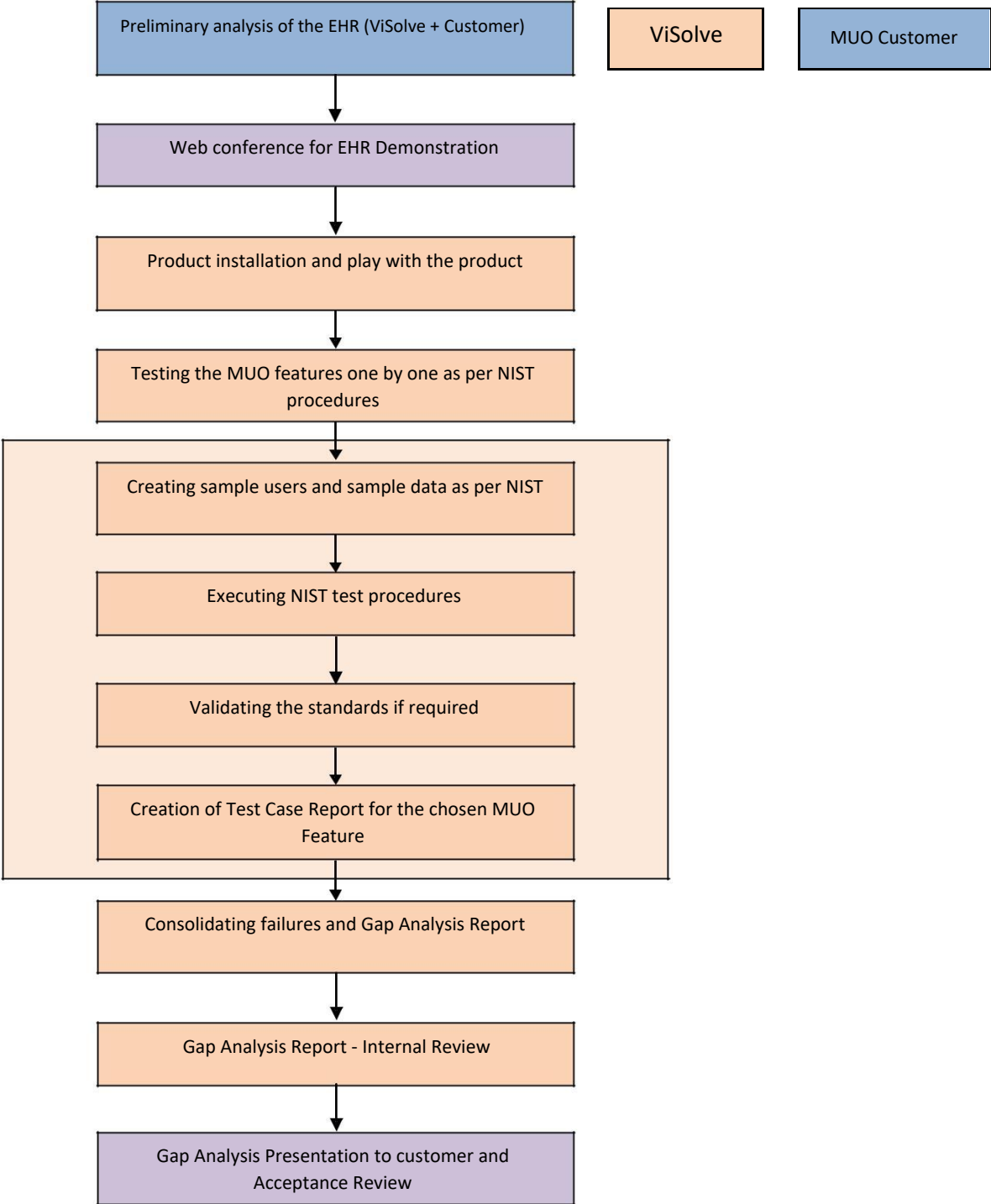
§170.302a through §170.302w

§170.304a through §170.304j

§170.306a through §170.306i



# ViSolve MU Initial Gap Analysis Process



## MU Initial Gap Analysis Task Details

---

#	MU Consulting Initial GAP Analysis Tasks
<b>Kick off Meeting and Product Understanding</b>	
1	Kick-off meeting and online meeting session to showcase the product features
2	Installing and the understanding of the EHR Product [For MU testing]
<b>MU Testing against NIST Test Procedures</b>	
1	Feeding the NIST test data
2	Verifying MU features as per the NIST test procedures
3	Whenever required, validating the generated data [HL7, NCPDP,CCR,CCD,PQRI]
4	Test Case Report for each MU feature
<b>MU Gap Analysis Report</b>	
1	Consolidating Gap Analysis Report from the test case reports
2	Internal Review
3	Gap Analysis Report Presentation to Customer and Acceptance Review

#	Potential Tasks following Initial GAP Analysis
1	Intermediate Design Guidance / Development Assistance as required by the Customer <i>Note: Effort duration depends on type and level of assistance required by Customer</i>
2	Final GAP Analysis before applying for certification
3	Demonstration of Product's MU Compliance to ONC-ATCB

